



4 Salamanca Place, London
SE1

GARTONJONES.COM



4 Salamanca Place, London , SE1

£525 Per Week

A particularly spacious one-bedroom apartment extending to approximately 749sq.ft (69.6sq.m), available to rent within Salamanca Tower, part of the sought-after Salamanca Place development by Berkeley Homes. The development is discreetly positioned just moments from the River Thames, ideally located between Vauxhall Bridge and Lambeth Bridge. Offered furnished, the apartment features a bright and generously sized open-plan reception room with a fully integrated modern kitchen, providing an excellent space for both relaxing and entertaining. The reception area opens onto a private balcony, while the accommodation further comprises a well-proportioned double bedroom, a contemporary bathroom suite, and excellent built-in storage throughout.

Salamanca Place enjoys a prime central location within easy walking distance of Vauxhall station, offering Victoria Line, National Rail and extensive bus services, as well as the amenities of Westminster, the South Bank and the surrounding riverside walkways. Residents benefit from close proximity to a wide selection of shops, cafés, restaurants and some of London's most iconic landmarks. Please note furniture may differ to that shown in the current photos.

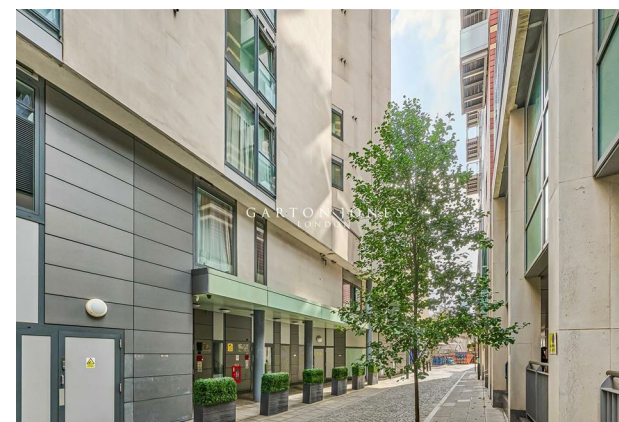
- Electricity Supply — Mains | Water Supply — Mains | Sewerage — Mains | Heating — Gas Central Heating
- Broadband & Mobile Signal : Check Coverage via Ofcom
- Parking: No Parking
- Lift Access
- Building Safety: EWS1 Available on Request
- Council Tax Band D (London Borough of Lambeth)
- 5 Week Security Deposit
- Holding deposit equivalent to 1 week of rent
- Rent to be payable monthly in advance
- EPC Rating B (82)

- 1 Bedroom
- 749sq.ft (69.6sq.m)
- Open Plan Reception
- Modern Integrated Kitchen
- Lift
- 0.6 Miles to Vauxhall Station

GARTON JONES.COM

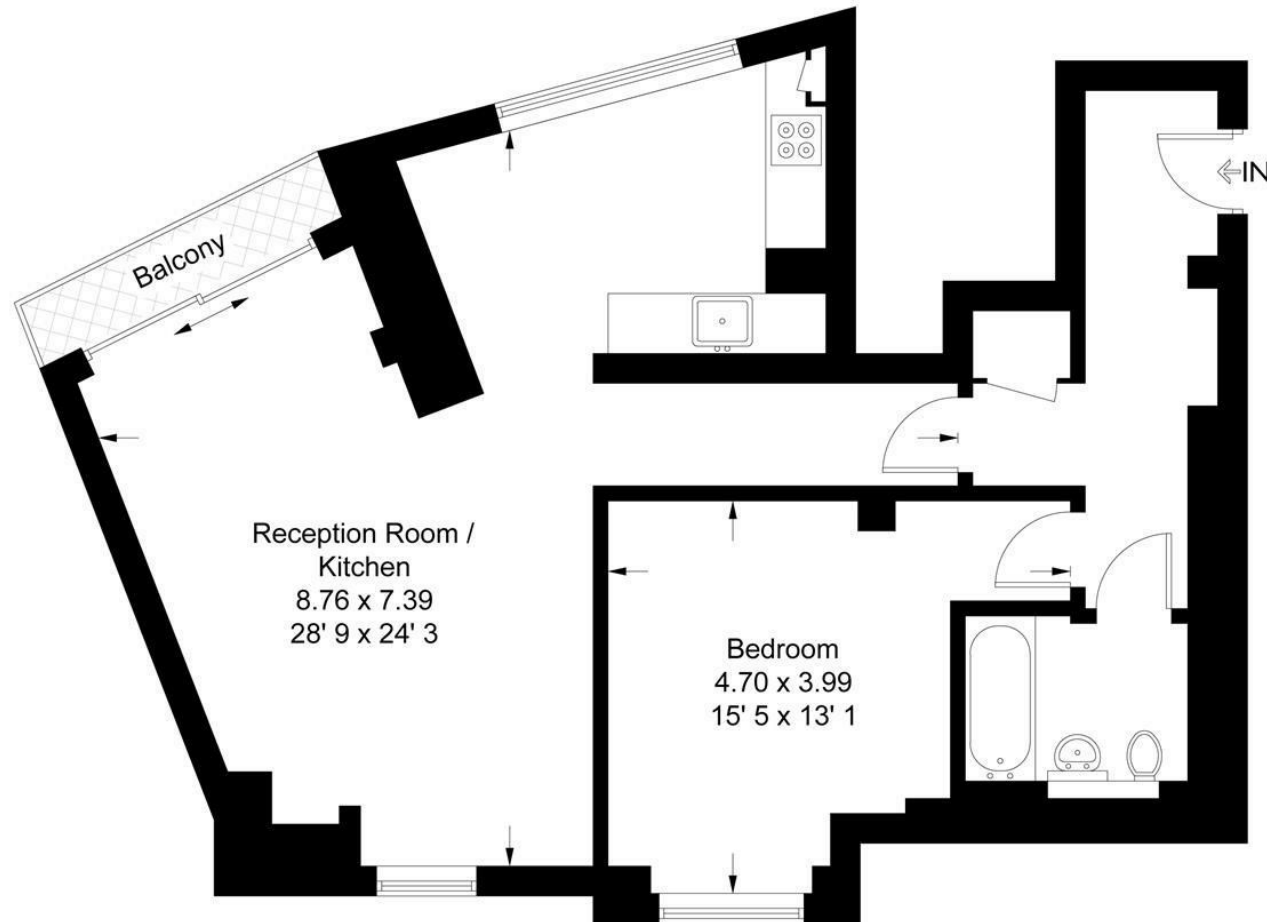
9 Albert
Embankment
London
SE1 7SP

Lettings:
+44 (0) 20 7735 1888
nineelms@gartonjones.com
www.gartonjones.com



Salamanca Tower

Approximate Gross Internal Area = 749 sq ft / 69.6 sq m



Not to scale, for guidance only and must not be relied upon as a statement of fact
All measurements and areas are approximate only and have been prepared in
accordance with the current edition of the RICS Code of Measuring Practice

